

Well-Ordered Language

Textbook 3A Scavenger Hunt

Answer the following questions by using your 3A Well-Ordered Language Textbook to find the answer!

1. What are the **eight parts of speech**?

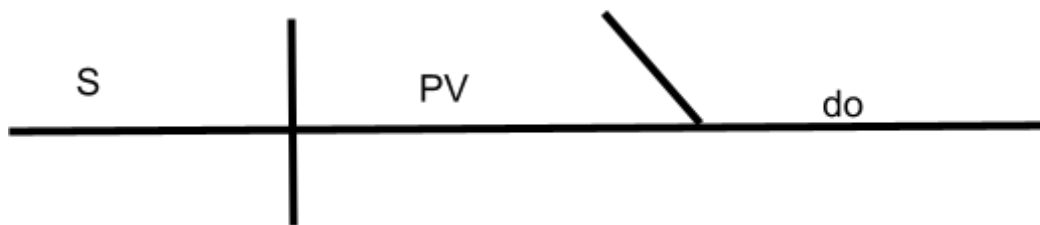
Nouns, verbs, adjectives, adverbs, prepositions, pronouns, conjunctions, interjections

2. How many **types of sentences** are there? Four-Declarative, Interrogative, imperative, exclamatory

3. Write the song lyrics to the **adverb song**. An adverb is a part of speech. It modifies a verb or another adverb. It can also modify an adjective and answers three questions: how, when or where? It answers three questions: how, when or where?

4. List 10 **prepositions**. Varies. Answers are listed under Preposition in the glossary or in the list of prepositions song lyrics.

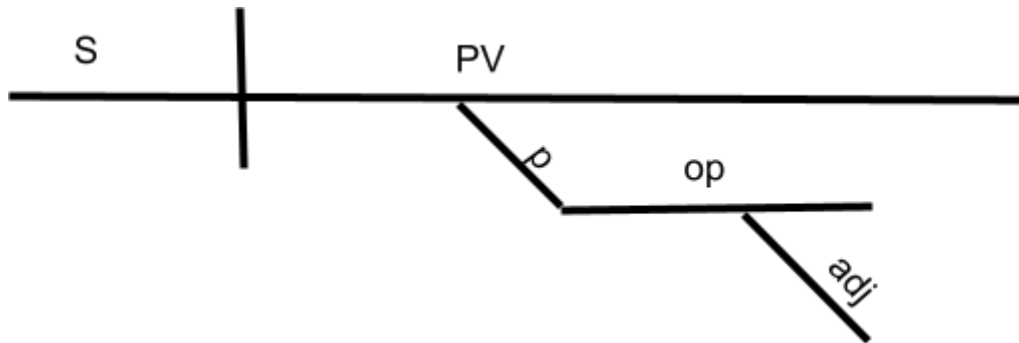
5. Draw the diagram for a **Predicate Verb with Direct Object** sentence.



6. Write the definition for **verb**. A part of speech that shows action or a state of being.
7. List the three types of **predicates**. Predicate Verb, Predicate Adjective, Predicate Nominative

Name: _____

8. Draw the diagram for a sentence with an **Adverbial Prepositional Phrase**.



9. List the **Be Verbs**. Am, is, are, was, were, be, being, been
10. Write the definition for **Linking Verb**. A verb that joins the subject to the predicate. In other words, it is the glue that joins the subject either to a noun that renames the subject or to an adjective that describes the subject. Linking verbs express a state of being.

Bonus Point: Draw a heart in the top left hand corner of your paper.