

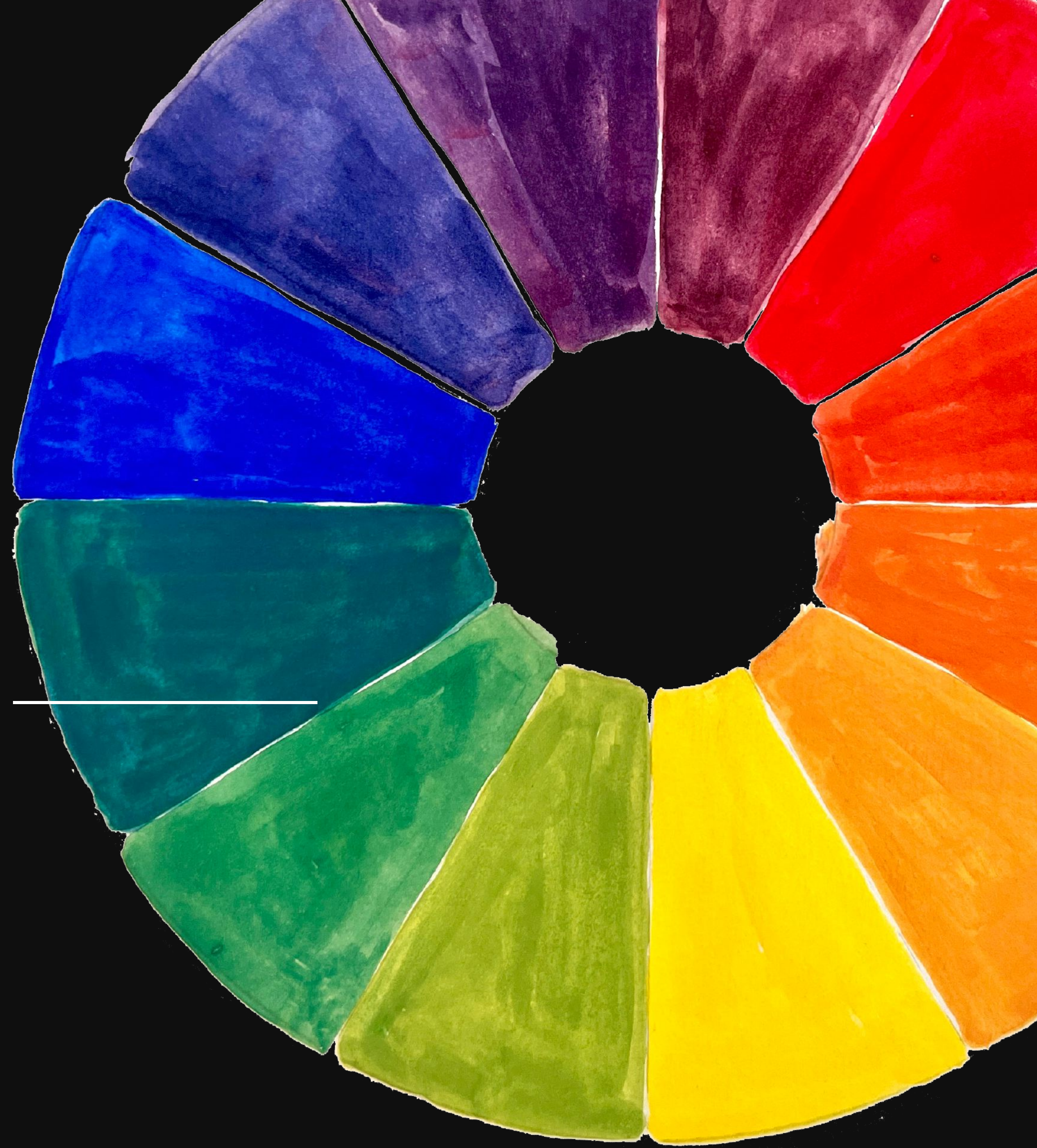


COLOR THEORY

Harmonies & Composition Planning

LAST WEEK:

- 12 Colors: _____, _____ & _____
- Color Mixing to create new colors



Now that we know the colors,
how do we use them together?



Dan Scott, Fraser Island, Drama, 2020



Dan Scott, Fraser Island, High Key, 2020

THE FOUR QUALITIES OF COLOR

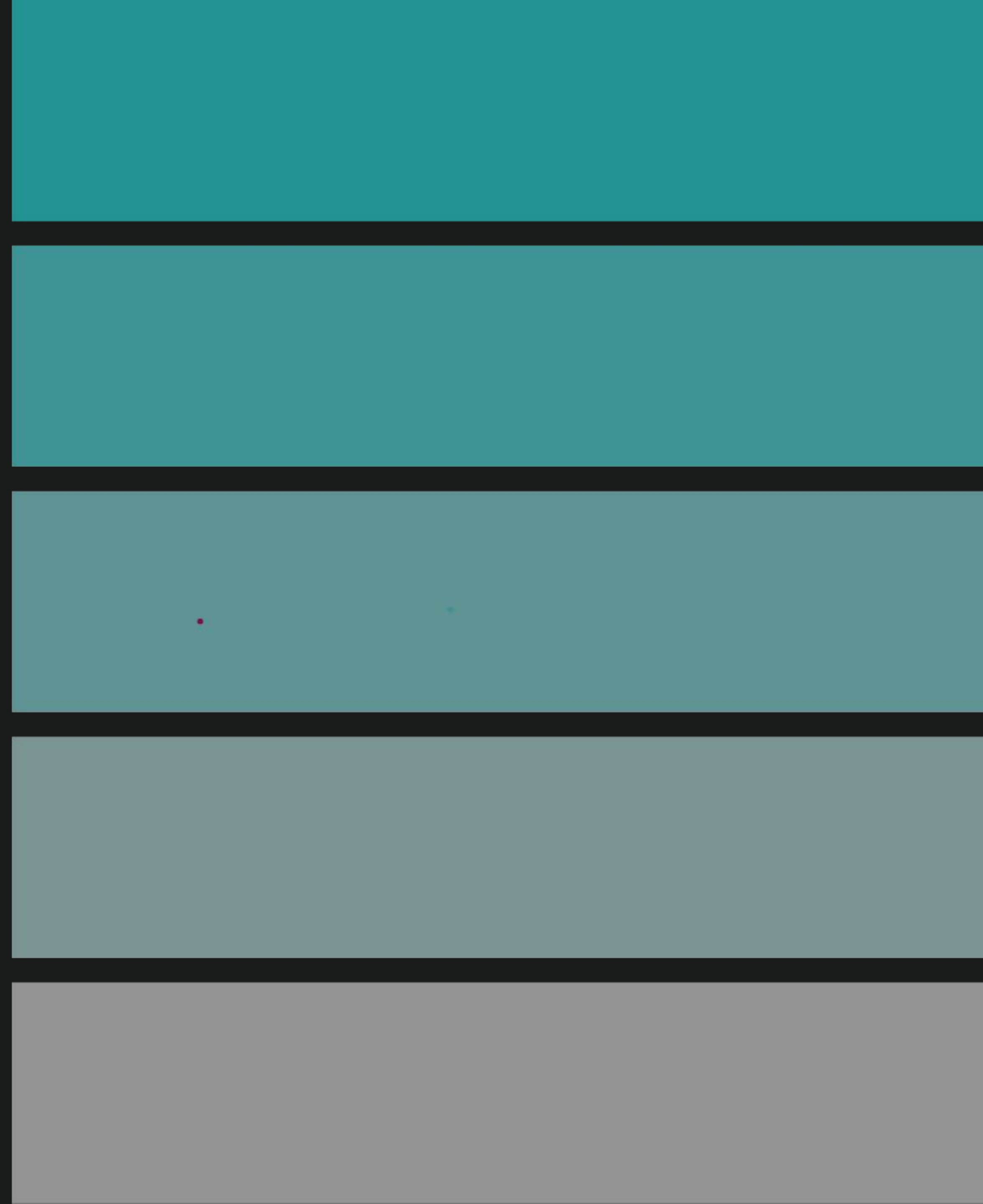
- HUE: *Pure Color Position*
- SATURATION: *Vibrant vs Dull*
- VALUE: *Light vs Dark*
- TEMPERATURE: *Warm vs Cool*

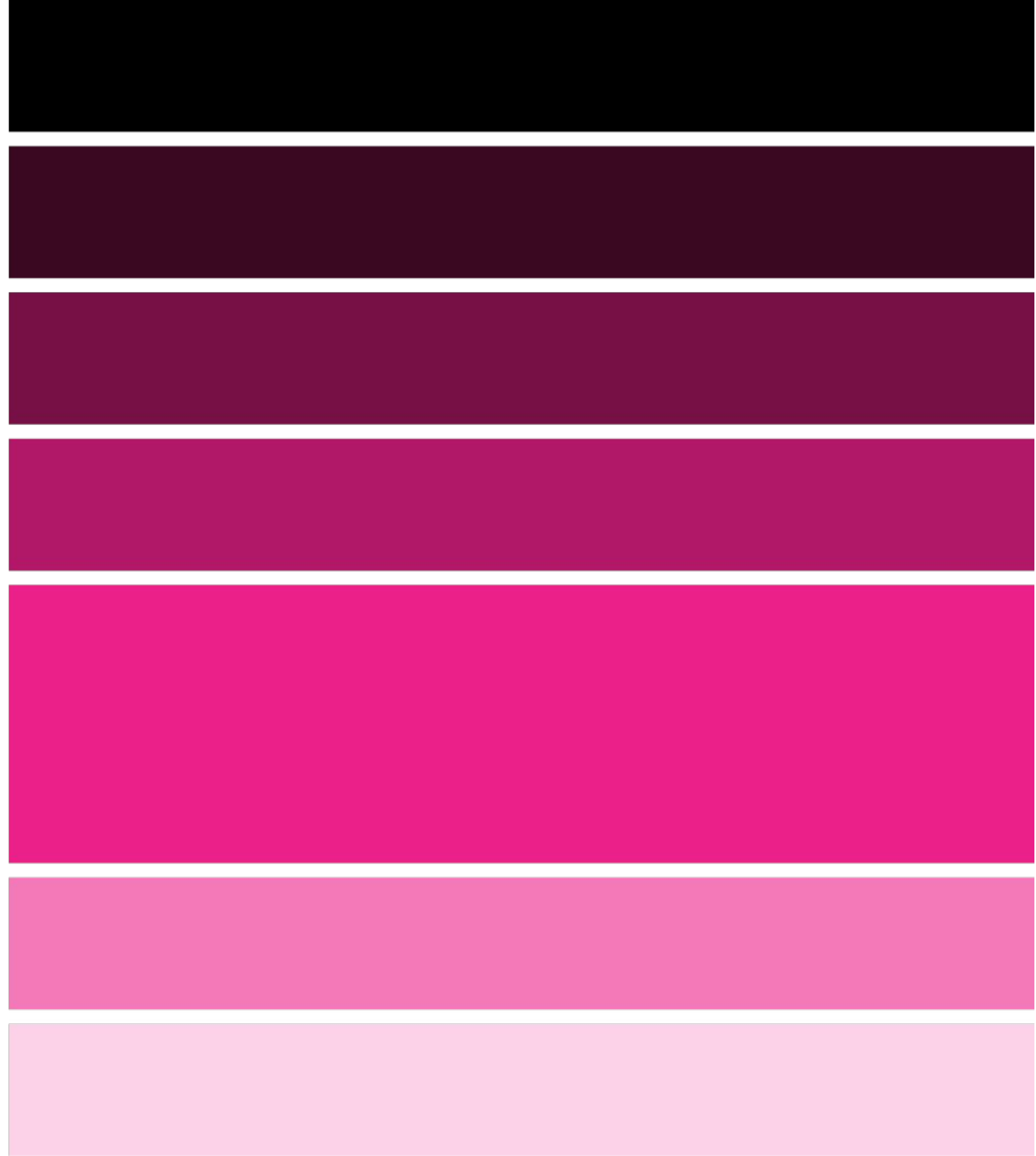
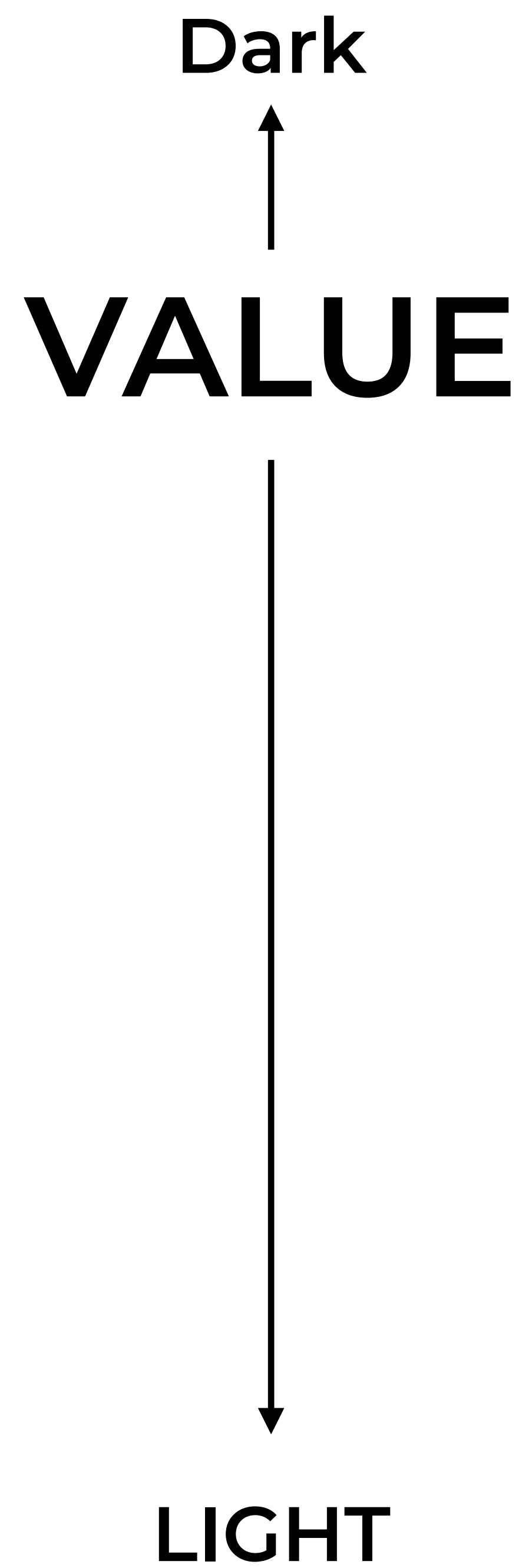
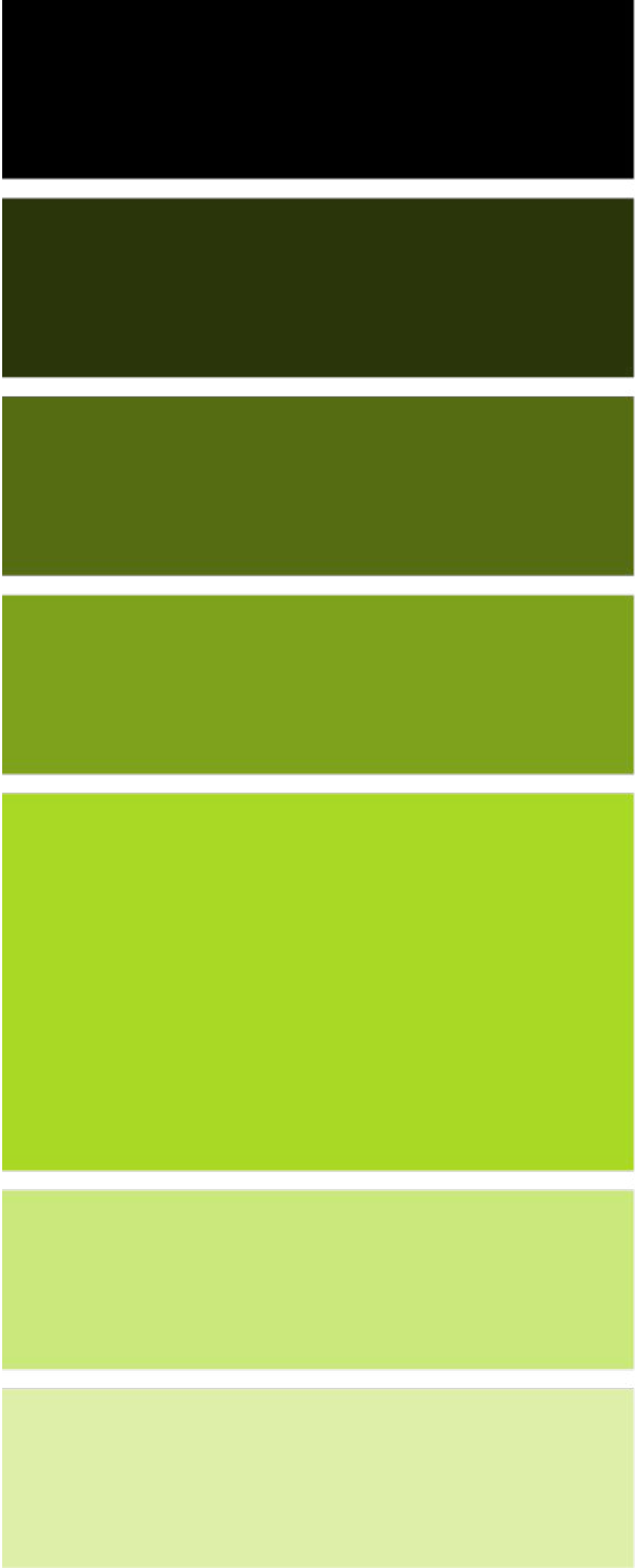




Saturated
↑
SATURATION

↓
Desaturated





TEMPERATURE



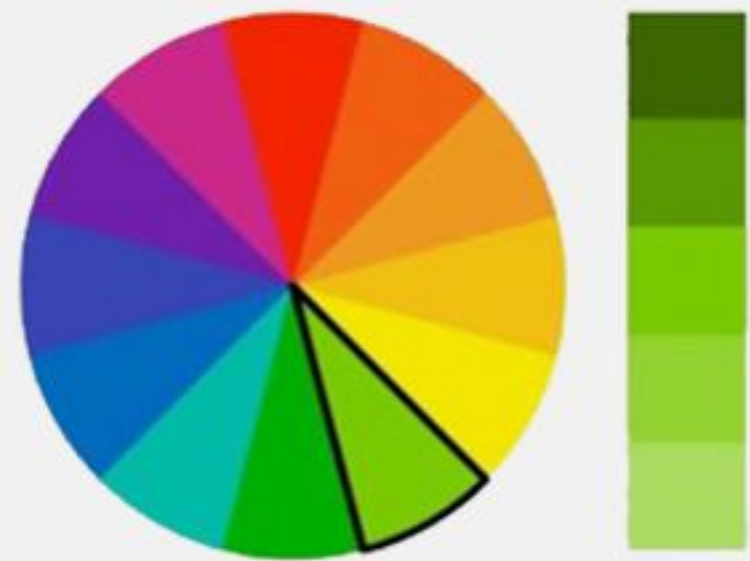
TEMPERATURE



WHAT ARE COLOR HARMONIES?

Formulas for choosing colors that look balanced and intentional.

Monochromatic



Complementary



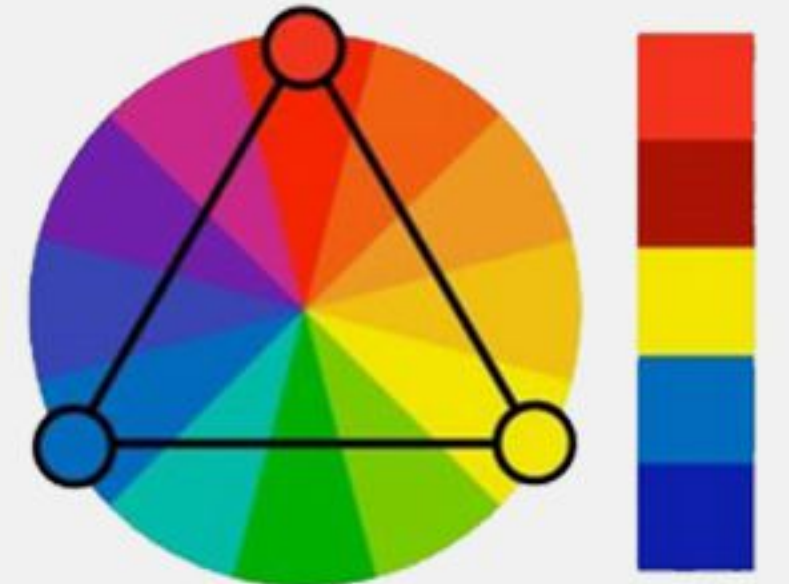
Split-Complementary



Analogous



Triadic



MONOCHROMATIC

Use of one hue in a variety of values and saturations.



The Good Samaritan, Rembrandt, 1633



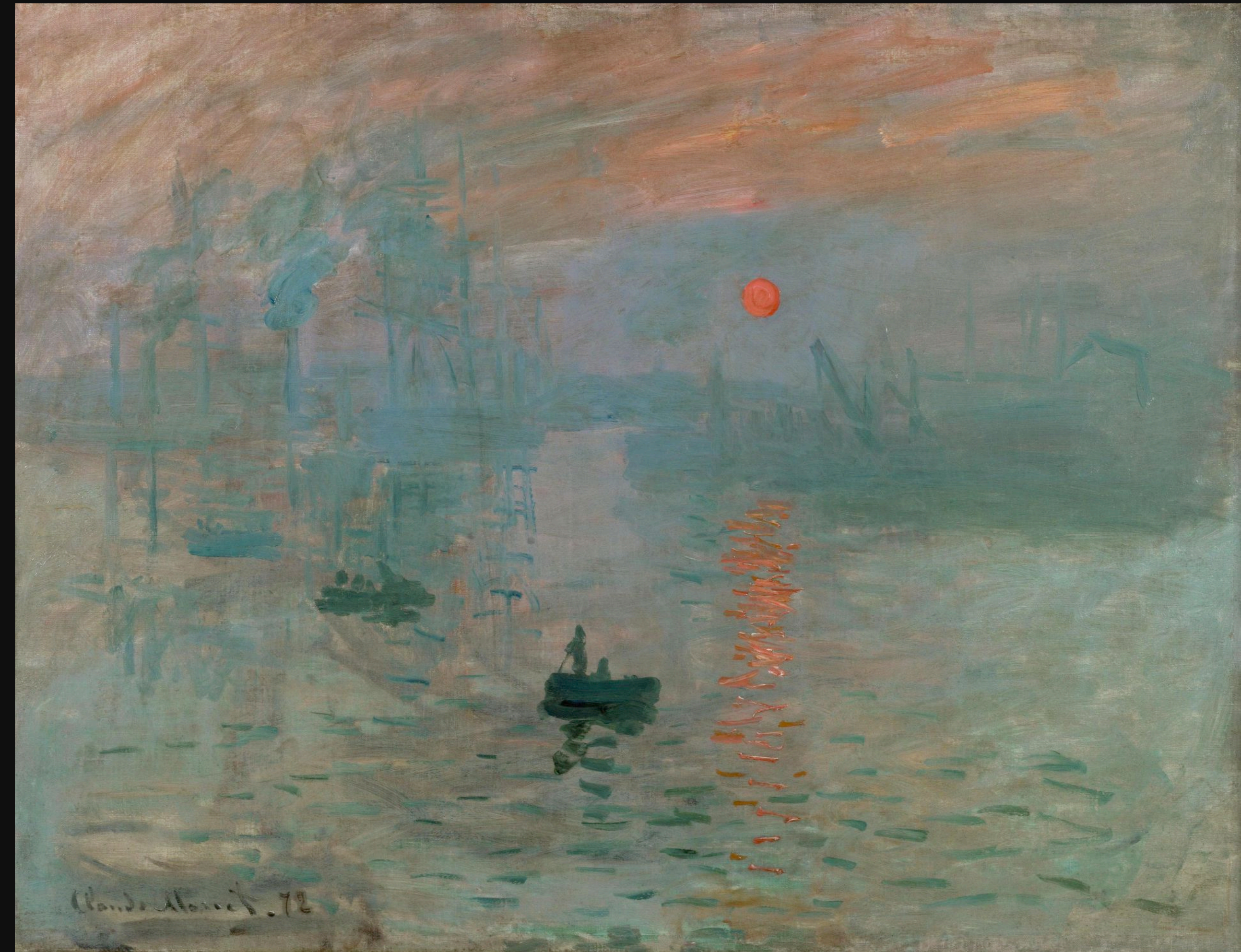
Woman with Folded Arms, Pablo Picasso, 1901

COMPLEMENTARY

Use of two colors from opposite sides of the color wheel



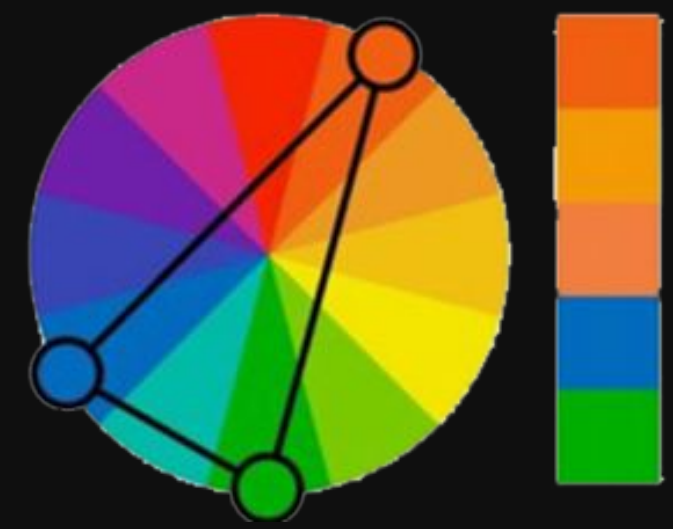
The Starry Night, Vincent van Gogh, 1889



Impression, Sunrise, Claude Monet, 1872

SPLIT-COMPLEMENTARY

Similar to complementary, except *one of the colors is split into two nearby colors*



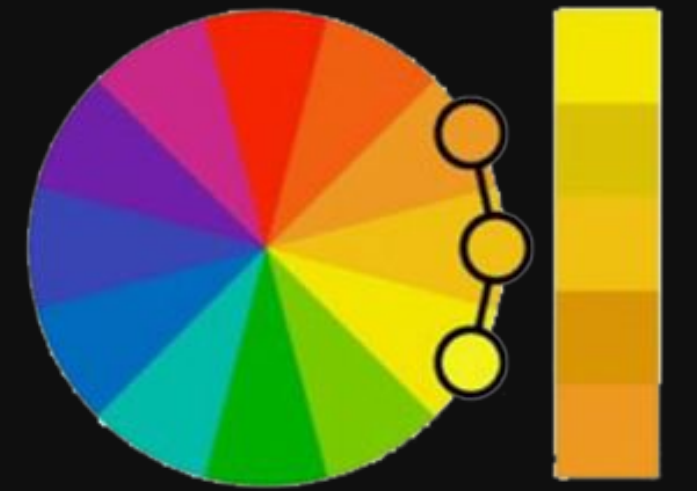
The Conversation, Henri Matisse , 1908-12



Self-portrait with Bandaged Ear and Pipe, van Gogh, 1889

ANALOGOUS

Uses two to four colors that are next to each other on the color wheel



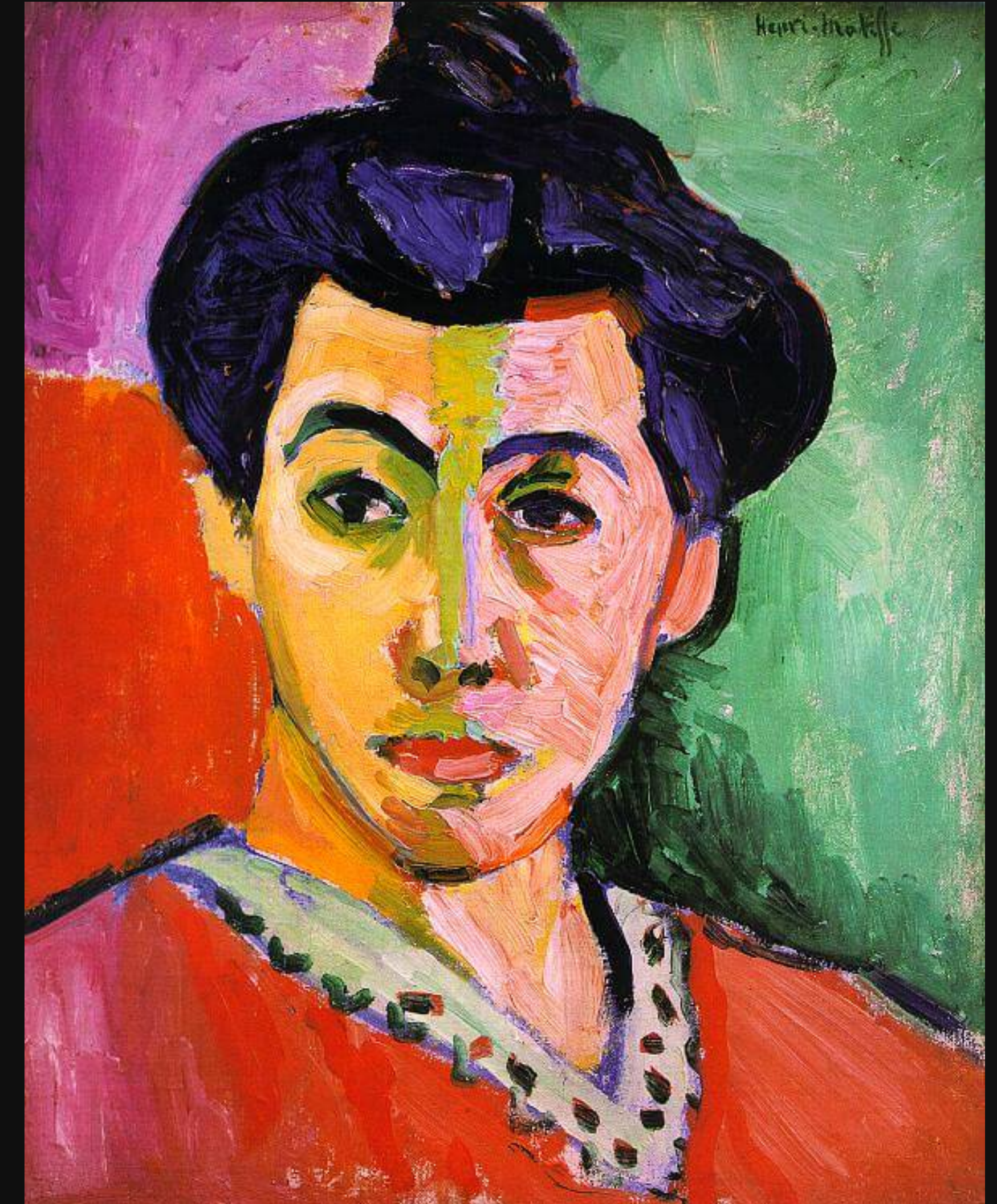
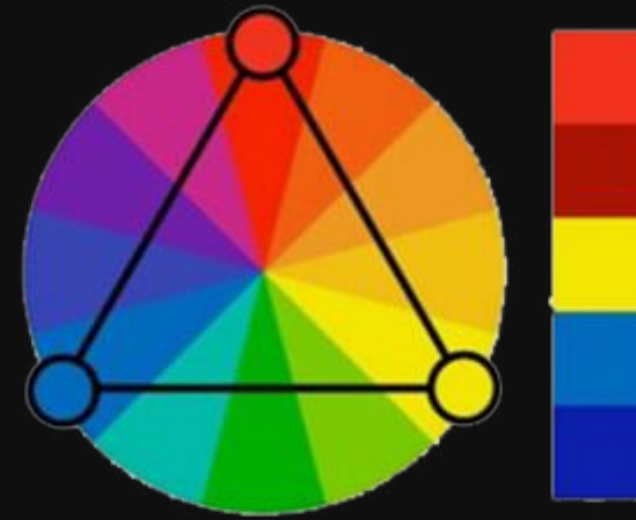
The Japanese Bridge (The Water Lilly Pond), Monet, 1899



Irises, Vincent van Gogh, 1889

TRIADIC

Uses three colors that are evenly spaced around the color wheel like a triangle

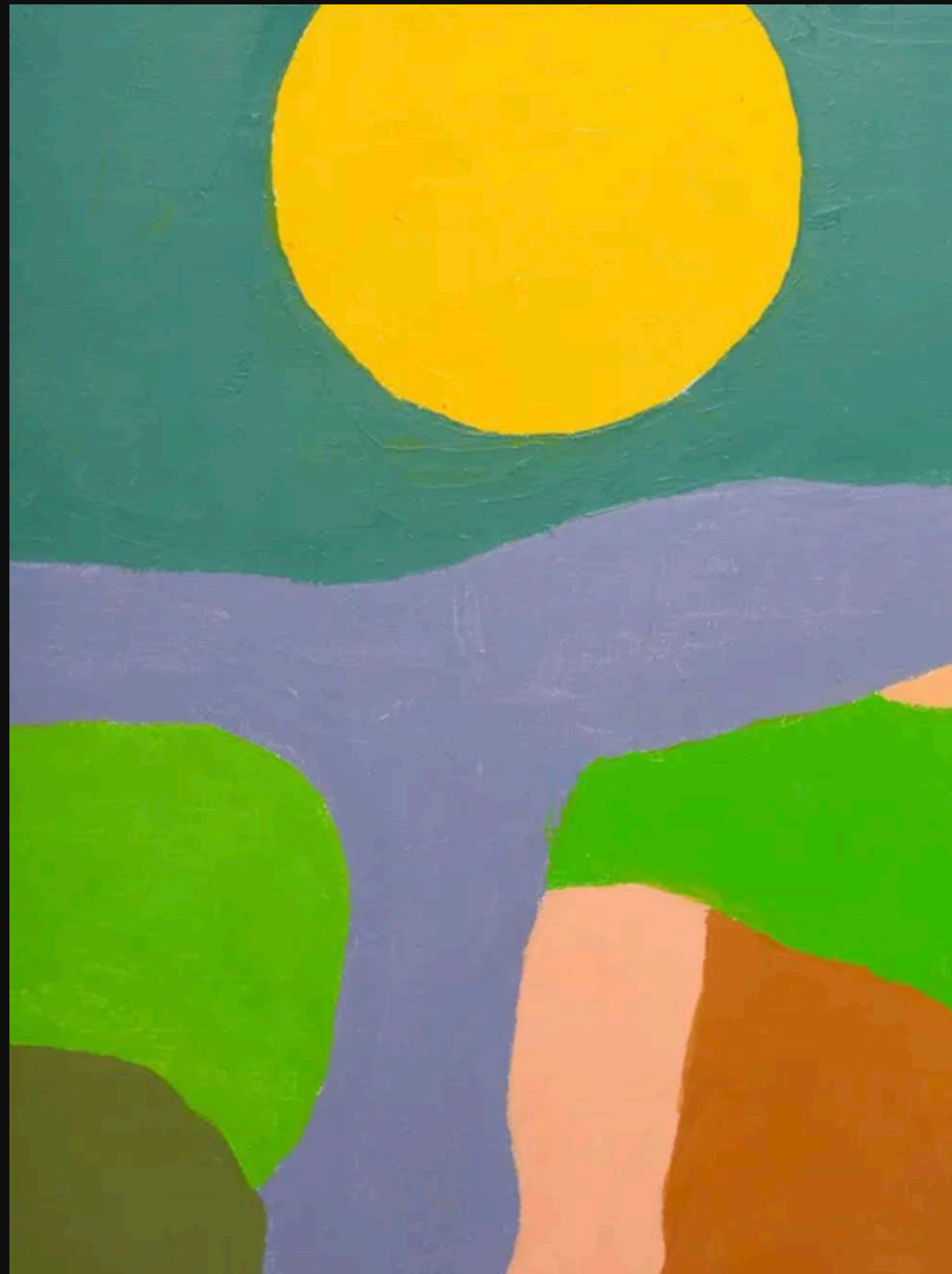
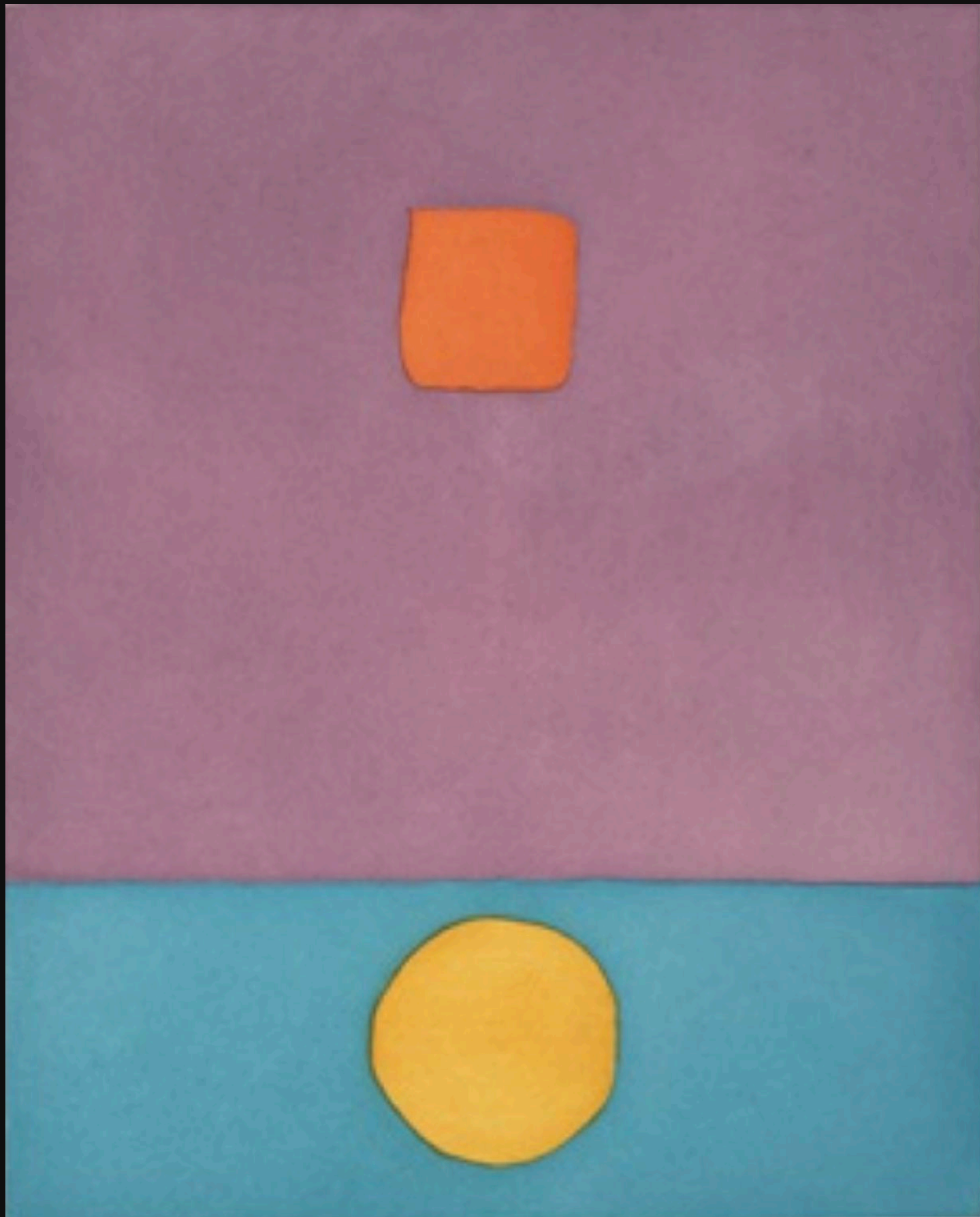


Le Chahut (The CanCan), Georges Seurat, 1889-90

The Green Stripe, Henri Matisse, 1905

3-LINE COMPOSITION PROJECT

Inspired by Etel Adnan



INSTRUCTIONS:

1. Draw a grid on your sketchbook page creating 6 rectangles
2. Create 6 different compositions using ONLY 3 lines each
3. Label each with a color harmony you want to use (you can use colored pencils to try out different harmonies)

ASSIGNMENT RECAP

- 6 sketches with different harmonies
- Label each palette choice
- Sketches due NEXT week
- Choose your top composition to paint next week

REMINDER: You may have time next week to finish your color wheel