

# ANSWERS

## Sentences for Practice Principal Elements

Analyze the following sentences.

1. <sup>S</sup> Kettles <sup>PV</sup> whistle.

Kettles | whistle

2. <sup>S</sup> Kids <sup>hv</sup> are <sup>PV</sup> giggling.

Kids | are giggling

3. <sup>S</sup> Clocks <sup>hv</sup> are <sup>PV</sup> ticking.

Clocks | are ticking

4. <sup>S</sup> Loki <sup>hv</sup> might <sup>PV</sup> nap.

Loki | might nap

5. <sup>S</sup> Curtains <sup>hv</sup> will <sup>PV</sup> rustle.

Curtains | will rustle

6. <sup>S</sup> Grandma <sup>hv</sup> is <sup>PV</sup> reading.

Grandma | is reading



# Sentences for Practice

## ANSWERS

### Four Kinds of Sentences & Principal Elements

7. <sup>S</sup> Soup <sup>PV</sup> boils.

Soup | boils

8. <sup>S</sup> Faucets <sup>hv</sup> <sup>PV</sup> are dripping.

Faucets | are dripping

9. <sup>S</sup> Doors <sup>hv</sup> <sup>PV</sup> are squeaking.

Doors | are squeaking

10. <sup>S</sup> Chip <sup>PV</sup> barks.

Chip | barks



# Sentences for Practice—Tale

## ANSWERS

### Four Kinds of Sentences & Principal Elements

Analyze the following sentences, which refer to Aesop's fable "The Bear and the Bees."

1. <sup>S</sup> Bear <sup>PV</sup> discovered.

Bear | discovered

**From the Sideline:** These extra practice sentences are a synopsis of "The Bear and the Bees." The fable and extended lesson notes are on the following pages.

2. <sup>S</sup> Bees <sup>PV</sup> nestle.

Bees | nestle

3. <sup>S</sup> Bear <sup>PV</sup> snooped.

Bear | snooped

4. <sup>S</sup> Bee <sup>hv</sup> is <sup>PV</sup> flying.

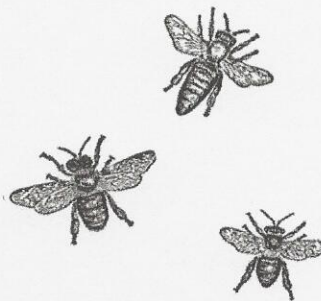
Bee | is flying

5. <sup>S</sup> Bear <sup>hv</sup> might <sup>PV</sup> eat.

Bear | might eat

6. <sup>S</sup> Bee <sup>hv</sup> will <sup>PV</sup> sting.

Bee | will sting





# ANSWERS Sentences for Practice—Tale

## Four Kinds of Sentences & Principal Elements

7. <sup>S</sup> Bear <sup>PV</sup> growled.

Bear | growled

8. <sup>S</sup> Bear <sup>hv</sup> is <sup>PV</sup> swatting.

Bear | is swatting

9. <sup>S</sup> Bees <sup>hv</sup> are <sup>PV</sup> swarming.

Bees | are swarming

10. <sup>S</sup> Bear <sup>hv</sup> is <sup>PV</sup> diving.

Bear | is diving